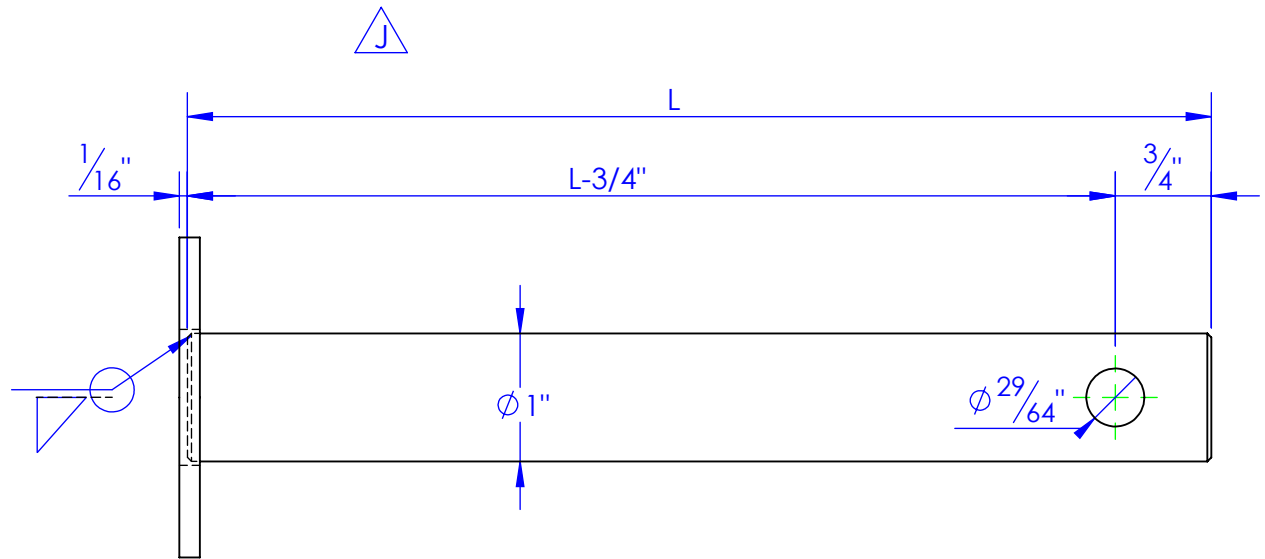
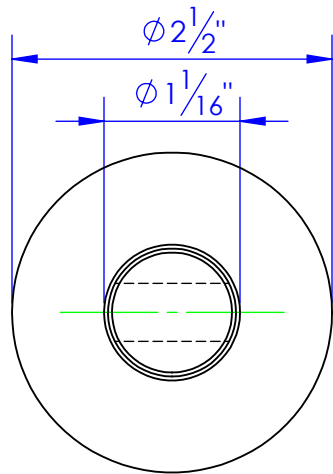


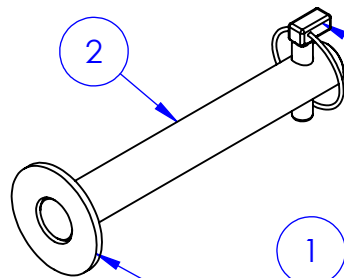
Connecting pins for arm attachments

| Part Number | L | WHERE USED |
|---------------|------------------------|---|
| | L-means overall length | |
| RE-PN-C1X475 | 4 7/8 | AE-121, AE-121SB, SP-118 OFFSET, SP-118 RISER, PHD1-9-100 |
| RE-PN-C1X525 | 5 1/4 | AE-10150 SB, AE-FLKR200, AE-FLKR300, DBLP-150, SP-11850 OFFSET, SP-11850 OFF .5, SP-11850 RISER, PHD1-9-150, PHD1-9-100 |
| RE-PN-C1X562 | 5 5/8 | AE-10150, AE-FLKR250, AE-FLKR350, BOX SCRAPER ARM SOCKET 150 SERIES |
| RE-PN-C1X600 | 6 | SBE-11850, SQ BALE ENGAGEMENT |
| RE-PN-C1X800 | 8 | PHD-1-9-100, PHD1-9-150 |
| RE-PN-C1X1225 | 12 1/4 | REEL LIFT ATTACHMENT |

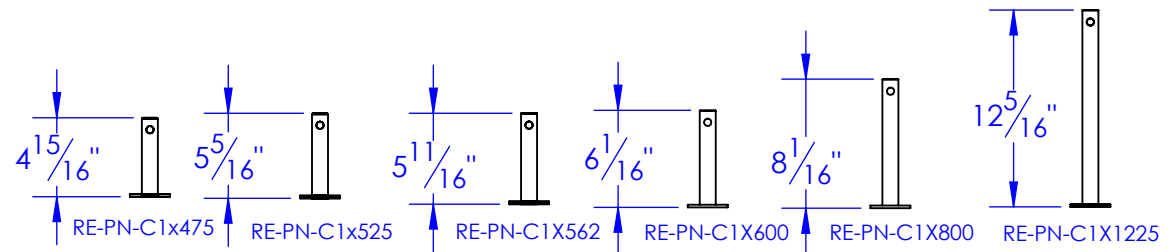
| REV. | DESCRIPTION | DATE | APPROVED |
|------|---------------------------|----------|----------|
| J | UPDATED TO MATCH 3D MODEL | 4/4/2012 | |



STC-CR 1x4142 PIN



HD-PL .4375 HD 7/16 Lynch Pin.



PROPRIETARY AND CONFIDENTIAL
THE INFORMATION CONTAINED IN THIS DRAWING IS THE SOLE PROPERTY OF TRIPLE C INC. ANY REPRODUCTION IN PART OR AS A WHOLE WITHOUT THE WRITTEN PERMISSION OF TRIPLE C INC. IS PROHIBITED.

| | |
|--|----|
| DIMENSIONS ARE IN INCHES TOLERANCES: FRACTIONAL $\pm 1/16$ ANGULAR: MACH ± 1 BEND \pm TWO PLACE DECIMAL ± 010 THREE PLACE DECIMAL ± 005 | |
| MATERIAL | -- |
| DO NOT SCALE DRAWING | |

| | |
|-----------------|----------------|
| NAME | DATE |
| DRAWN | HEATH 4/4/2012 |
| PART # | SEE DWG |
| ASM # | |
| COMMENTS: | |
| PIN, CONNECTING | |

P.O. BOX 248,
SABETHA, KS 66534

TRIPLE C INC.

SIZE **A** DWG. NO. **10-1707 J** REV. **J**

SCALE: 1:1.5 WEIGHT: -- SHEET 1 OF 1